

SC-400

DENTAL STERILIZATION CENTER WATER PROCESSOR



The Steri-Center 400 is tailored to the sterilization center requirements of large practices & clinics. It simultaneously handles high bottle counts, multiple instrument washers and large autoclave & sterilizer stacks. It's the perfect solution for future-proofing your growing practice.

Features:

- Electric pump
 - **overcomes low tap water pressure**
 - consistent production at 16 gallons / hour
 - minimizes filter changes
- Produces 3 water types:
 - Mineral-free (DI) water for autoclave & sterilizer stacks
 - Low-mineral water for instrument washer
 - Low-mineral **disinfected** water for dental unit bottles.
- Produces 16 gallons per hour (400 gpd)*.
- Easy to See LED & Gauge Diagnosis Center.
- Revolutionary design for easy install & service
 - compact size for install in base cabinet
 - handle for easy lift in/out of cabinet
 - zero-mess top mount filter changes
- Includes
 - remote DI dispensing gun for direct fill of autoclave & sterilizer reservoirs
 - chrome faucet for bottle fill
 - 6 gallon high flow tank

Advantages:

- Eliminates frequent DI filter changes with extended life filtration.
- Top mount replacement design eliminates messy filter changes keeps your cabinets dry.
- Power-driven system eliminates water shortages, increases delivery pressure.

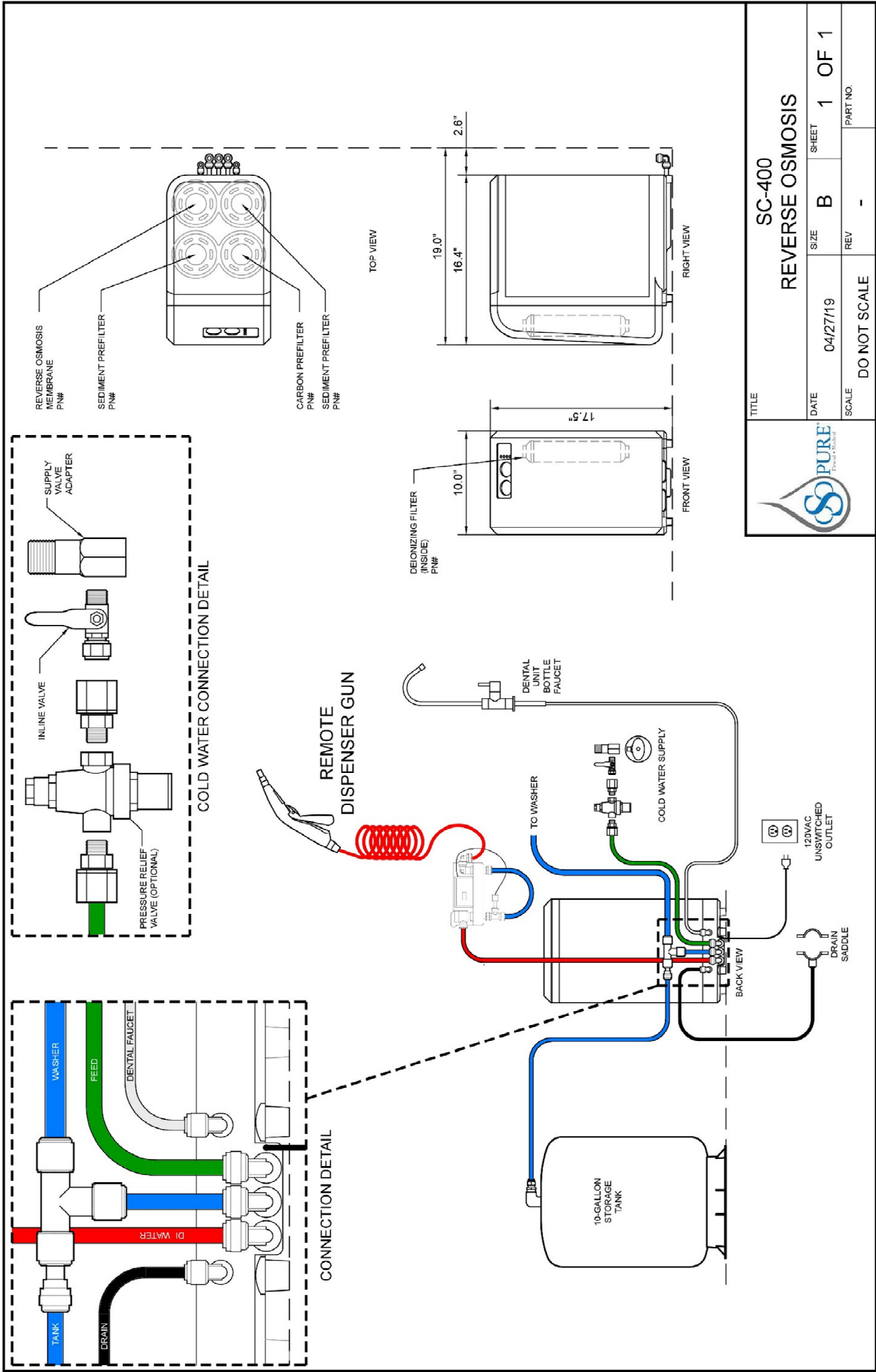
Benefits:

- Designed for large practices & clinics. Simultaneously handles high bottle counts, multiple instrument washers, large autoclave & sterilizer stacks.
- Eliminates bottled water hassles
 - trips to store
 - storing the bottles
 - lifting of heavy bottles
 - staff injuries.
- Powered design overcomes water pressure and temperature deficiencies.
- Patented final purity cartridge.

Specifications:

Tap water type	potable, unsoftened
Tap water temperature	40°F - 90°F
Tap water pressure	20 – 75 psi
Production	16 gph / 400 gpd
Height	17.5 in
Width	10 in
Depth	19 in
Water Ports	3/8"
Electrical (1 plug)	110VAC / 60Hz / 2A
Shipping weight	42 lbs + 26 lbs
Annual service kit	SC-4PM1
10-gallon tank	DWS-ROSTW-14
Instrument washer kit	included





Note: Do not use with water that is microbiologically unsafe or of unknown quality. This device is only intended to be used as prescribed in the operation manual any miss-use, abuse improper installation or maintenance voids any and all warranties and claims.